

THERMAL HEAT PUMPS

Prices include VAT - While Stocks Last - E & OE - Ts & Cs apply

ENERGY EFFICIENT SOLUTIONS

AVAILABLE TO ORDER NOW

REPLACE YOUR GEYSER WITH THE LATEST

ENERGY EFFICIENT WATER HEATING TECHNOLOGY

FOR YOUR HOME & OFFICE

- Low Pressure Water Heating Solution
- Primary heating by heat pump reduces overall energy consumption
- Proprietary Coil Heat Exchanger prevents limescale build up

- Integrated connection points for optional solar panel plant
- Wi-Fi connectivity for remote monitoring and setting of unit
- 2kW traditional heating element can be used to boost the system

Heating Method	Heat Pump & Element	Element
Rated Input Power (kW)	2,765	2
Rated Heating Capacity (kW)	4,8	1.8
Rated Current (A)	12,6	9.1
Power Supply	220 - 240V / 50Hz	
Auxiliary Heater	Element 2kW	
Refrigerant	R-410A	
Water Tank Empty Volume (L)	220L	
Water Tank Material	Fibreglass	
Water Inlet Connection	3/4" BSP	
Water Outlet Connection	3/4" BSP	
Insulation Thickness	50mm	
Water Heating Coil Pressure Rating	1000kPa / 10 Bar/ 145psi	
Tank Pressure	Atmospheric	
Water Heating Coil Material	304 Grade Stainless Steel	
Condenser Coil Material	316 Grade Stainless Steel	
Water Max Output Temperature	60°	
Solar Compatible	Yes (Coming Soon)	
Air Duct Size	180mm	
Fan Motor Type	ø190X80	
Fan Power Input	25W	
Evaporator Size	400mm x 355,6mm x 44mm	
Height of Water Inlet & Outlet	1335mm	
Overall Dimensions (LxBxH)	798mm x 659mm x 1781mm	
Unit Weight	92kg	



COMPLETE WITH WIFI

NOW ONLY

R27,999.00

EMS-TH200DT

WITHOUT WIFI

NOW ONLY

R23,999.00

EMS-TH200DT-NW

**Want To know more?
Watch Our
Youtube Video**



NATIONAL SALES CENTRE: 010 202 3400 | TECHNICAL CENTRE: 010 202 3500

HEAD OFFICE - LONGMEADOW - 010 202 3300 - 26 Nguni Drive, Longmeadow Estate West, Edenvale, Gauteng
Germiston 011 418 9600 | Richmond Park 021 492 2000 | Riverhorse 031 492 4800 | Pinetown 031 700 4215



THERMAL HEAT PUMPS

ENERGY EFFICIENT SOLUTIONS

AVAILABLE TO ORDER NOW

REPLACE YOUR GEYSER WITH THE LATEST

ENERGY EFFICIENT WATER HEATING TECHNOLOGY

FOR YOUR HOME & OFFICE

WIFI REMOTE CONTROL

- Wifi enabled controller allows wireless connectivity to the unit.
- Control your water heater using your wifi enabled smart device and our app.
- Three heating modes available:
 1. Heat pump only
 2. Conventional Element only
 3. Mixed Mode (Heat pump & Conventional element)



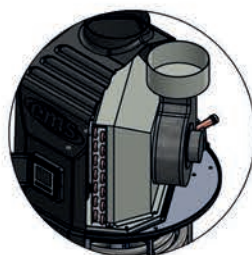
QUICK WATER HEATING

- Tanks are fitted with a conventional 2kW electric heating element, which can be used in conjunction with the heat pump unit to shorten water heating time or as a back up in the unlikely event that the heat pump unit should fail.



SOLAR READY

- Tanks are equipped with two fittings to allow the addition of a solar panel to the unit for added cost saving and water heating efficiency.



ENERGY EFFICIENT

- Reduced electricity usage up to two thirds (heat pump only) when compared to conventional heating element.
- Direct heating of the water by heat pump coil increases efficiency by minimizing heat loss into the atmosphere.

EASY INSTALLATION

- 3/4" BSP Male connectors make installation simple
- Integrated valve to fill and top off tank water level
- Fill indicator light helps maintain correct water level in tank

PROTECTS AGAINST LIME SCALE

- Prevents build of limescale in coil
- Rated for 7 bar of pressure
- Eliminates the need for a high pressure tank



INSULATED TANK

- Increases efficiency by preventing heat loss
- No risk of explosion or rupture

WANT TO KNOW MORE?
WATCH OUR YOUTUBE VIDEO

